

GEODIN 9.5 LIST PRICES: EDITIONS			
VERSION	LICENCE	ESSENTIALS	PROFESSIONAL
GeODin 9.5	one-time payment	1190 €	3750 €

GEODIN 9.5 UPDATE PRICES: VERSIONS AND MODULES			
VERSION	MODULES	ESSENTIALS	PROFESSIONAL
GeODin 8	Logs, Site	490 €	2390 €
	Labs, Maps, CS, GIS XTN	490 €	990 €
GeODin 7	Logs, Site	890 €	2790 €
	Labs, Maps, CS, GIS XTN	890 €	1590 €

All Prices are gross prices.

# FUGRO GEODIN SOFTWARE PRICES

Fugro offers GeODin 9.5 in three editions: Essentials, Professional and Portal. You can purchase a GeODin licence as a one-time payment. Renting provides the flexibility of just paying for GeODin when you need it. Updates are available from GeODin versions 7 & 8.

### EDITIONS & UPDATES

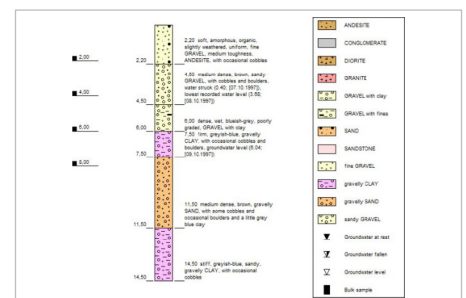
Update to GeODin 9.5 Essentials from GeODin Logs and/or GeODin Site in Versions 7 or 8 from just 490 €. Users who already have any one of the modules Labs, Maps, CS, or GIS Extension, can update to GeODin 9.5 Professional from just 990 €. Professional users get the functionality of all the former desktop modules, regardless of which modules you had previously. GeODin Portal is a new rental only product that replaces former GeODin Server editions.

Users with GeODin 6 or below should contact our support team for update requests.

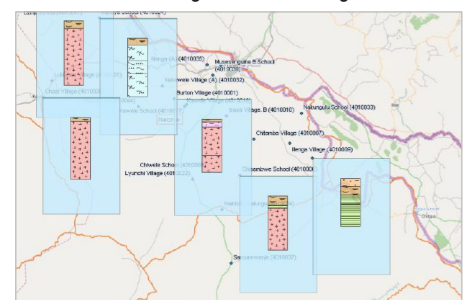
### HOW TO RENT

First of all decide which GeODin Edition you wish to rent. An activation fee is required for each licence before the initial three month period starts, after which licences can be rented for either one, three or twelve more months as required. The quickest way to rent licences is to buy via our web shop.

During the rental period you can buy your Essentials or Professional licence and Fugro will credit you the activation fee paid at the start of your rental activity. Rental licences always use the latest GeODin version, including the features available to GeODin+ customers.



GeODin Essentials: log with automatic legend



GeODin Professional: map with mini borehole profiles

<b>GEODIN 9.5 RENTAL PRICES: ACTIVATION FEE</b>			
<b>VERSION</b>	<b>ESSENTIALS</b>	<b>PROFESSIONAL</b>	<b>PORTAL</b>
GeODin 9.5	240 €	370 €	590 €

<b>GEODIN 9.5 RENTAL PRICES: TIME BLOCKS</b>			
<b>TIME PERIOD</b>	<b>ESSENTIALS</b>	<b>PROFESSIONAL</b>	<b>PORTAL</b>
First 3 months	240 €	690 €	1690* € / 2390** €
1 more month	90 €	270 €	590* € / 840** €
3 further months	240 €	690 €	1690* € / 2390** €
12 months	850 €	2490 €	5990* € / 8490** €

*\* no hosting included / \*\* Fugro hosting included  
All prices are gross prices.*

**RENTAL CONDITIONS**

All rental fees must be paid in advance. The one-time activation fee is refundable when a customer buys the rented licence. The minimum rental period is three months. After the initial three months customers may either rent for one, three or twelve months periods, or pause their rental activity. Rental periods start once Fugro has received payment and cannot be interrupted or transferred between different licences.

Please note that GeODin Portal licences can only be rented. GeODin Portal renting can optionally include Fugro hosting on managed servers for an additional monthly fee. All prices are gross prices.

**GEODIN+**

A GeODin+ contract ensures that you always have the latest features for GeODin Essentials or GeODin Professional. This is a new software update service and is available for both individual & network installations. All prices are gross annual fees per licence:

- 240 € for GeODin Essentials
- 720 € for GeODin Professional

Customers with GeODin+ get 20% extra support time free when purchasing support hours and can save 20% on training costs too. Note that GeODin+ includes help with installation issues, but does not include support; this can be purchased in time blocks from 1 hour to 20 hours. Please see our separate flyer sheets for software training and support conditions.