



# FUGRO GEODIN RENTAL OPTIONS

Software when you need it: Renting provides the flexibility of just paying for GeODin software when you need it. Depending upon your workflow this could be on a project by project basis or for a few months at a time. Rental versions have all the latest GeODin features.

## WHEN TO RENT

If your GeODin workflow demands are such that some licences are not always in use, then renting instead of buying may be an interesting alternative to consider.

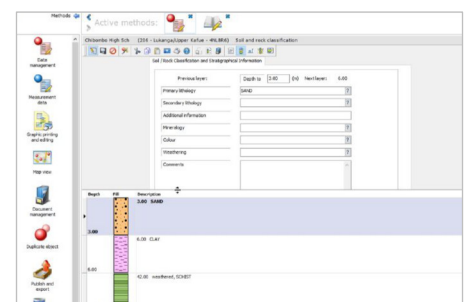
Renting GeODin for 18 months costs less than purchasing GeODin Essentials or Professional outright, with a GeODin+ software update service contract.

Purchasing twelve months rental instead of three is cheaper and saves between 110-270 €, depending on the GeODin Edition. Rental licences always use the latest GeODin version, including the features available to GeODin+ customers.

## HOW TO RENT

First of all decide which GeODin Edition you wish to rent. An activation fee is required for each licence before the initial three month period starts, after which licences can be rented for either one or three more months as required. The quickest way to rent licences is to buy via our web shop.

During the rental period you can buy your Essentials or Professional licence and Fugro will credit you the activation fee paid at the start of your rental activity. Please note that a GeODin Portal licence can only be rented.



Borehole log with preview window

Depth From	Value	Depth Interval
35.05	700.832	
35.06	700.855	
35.11	700.855	
35.35	700.846	
35.21	700.848	
35.25	700.849	
35.31	700.855	
35.36	701.022	
35.41	701.054	
35.46	701.119	
35.51	701.537	
35.56	701.942	
35.61	701.532	
35.66	701.947	
35.71	701.943	
35.76	701.249	
35.81	701.277	
35.86	701.262	
35.91	701.271	
35.96	701.257	
36.01	701.254	

Borehole geophysics: calliper measurements

<b>GEODIN 9 RENTAL PRICES: ACTIVATION FEE</b>			
<b>VERSION</b>	<b>ESSENTIALS</b>	<b>PROFESSIONAL</b>	<b>PORTAL</b>
GeODin 9	240 €	370 €	590 €

<b>GEODIN 9 RENTAL PRICES: TIME BLOCKS</b>			
<b>TIME PERIOD</b>	<b>ESSENTIALS</b>	<b>PROFESSIONAL</b>	<b>PORTAL</b>
First 3 months	240 €	690 €	1690* € / 2390** €
1 more month	90 €	270 €	590* € / 840** €
3 further months	240 €	690 €	1690* € / 2390** €
12 months	850 €	2490 €	5990* € / 8490** €

*\* no hosting included / \*\* Fugro hosting included  
All prices are gross prices.*

**RENTAL CONDITIONS**

All rental fees must be paid in advance. The one-time activation fee is refundable when a customer buys the rented licence. The minimum rental period is three months. After the initial three months customers may either rent for one, three or twelve months periods, or pause their rental activity. Rental periods start once Fugro has received payment and cannot be interrupted or transferred between different licences.

Please note that GeODin Portal licences can only be rented. GeODin Portal renting can optionally include Fugro hosting on managed servers for an additional monthly fee. All prices are gross prices.

**REQUIREMENTS**

The recommended system requirements are PCs running Windows 10 (32- and 64-bit) with 4 GB RAM and a display resolution of 1920 x 1080 px. GeODin may also be run from a Windows 2012 Server or Citrix. Previous Windows operating systems and RAM configurations may work, but these are not supported. Please contact your network administrator for further information.

By default GeODin data is stored in a Microsoft Access® database (note that you do not need a Microsoft Access licence). When working with client/server databases the appropriate database drivers must also be installed. GeODin can be used as a stand-alone program or integrated in a multi-user network. Integrated contextual help is provided in English and German.

GeODin is designed, programmed and distributed exclusively by Fugro. Visit [www.geodin.com](http://www.geodin.com) for further information.