

FUGRO

GEODIN GIS EXTENSION

Working with GeODin® & ArcGIS™: The GeODin GIS Extension is specifically designed for customers who use ESRI® ArcGIS™ (versions 10.4 or higher) and want to dynamically embed their GeODin database in this GIS environment. With the extension you can control GeODin from the GIS and use many GeODin functions directly in a GIS context.

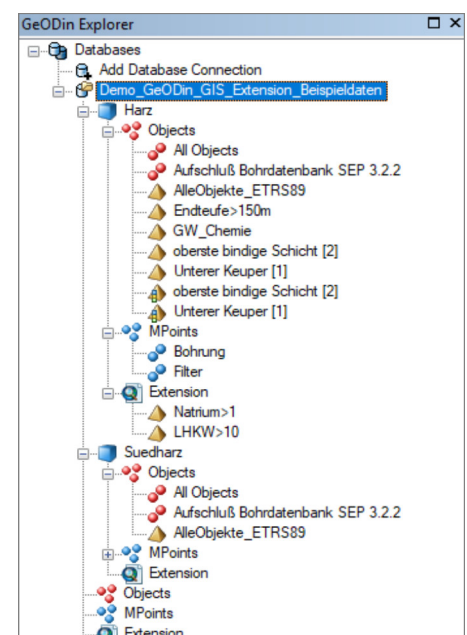
FEATURES

The GeODin GIS Extension for ArcGIS 10 displays GeODin data as a feature layer or in an info window. Objects remain linked to GeODin and by simply clicking on an object you can load it into GeODin. There you can immediately enter further data or edit graphics. Graphics can be displayed directly in GIS. In addition, you have advanced search capabilities using the GeODin attributes. The functionality of the GeODin GIS Extension is divided into two main areas: basic functions that are free and GeODin functions that are licensed.

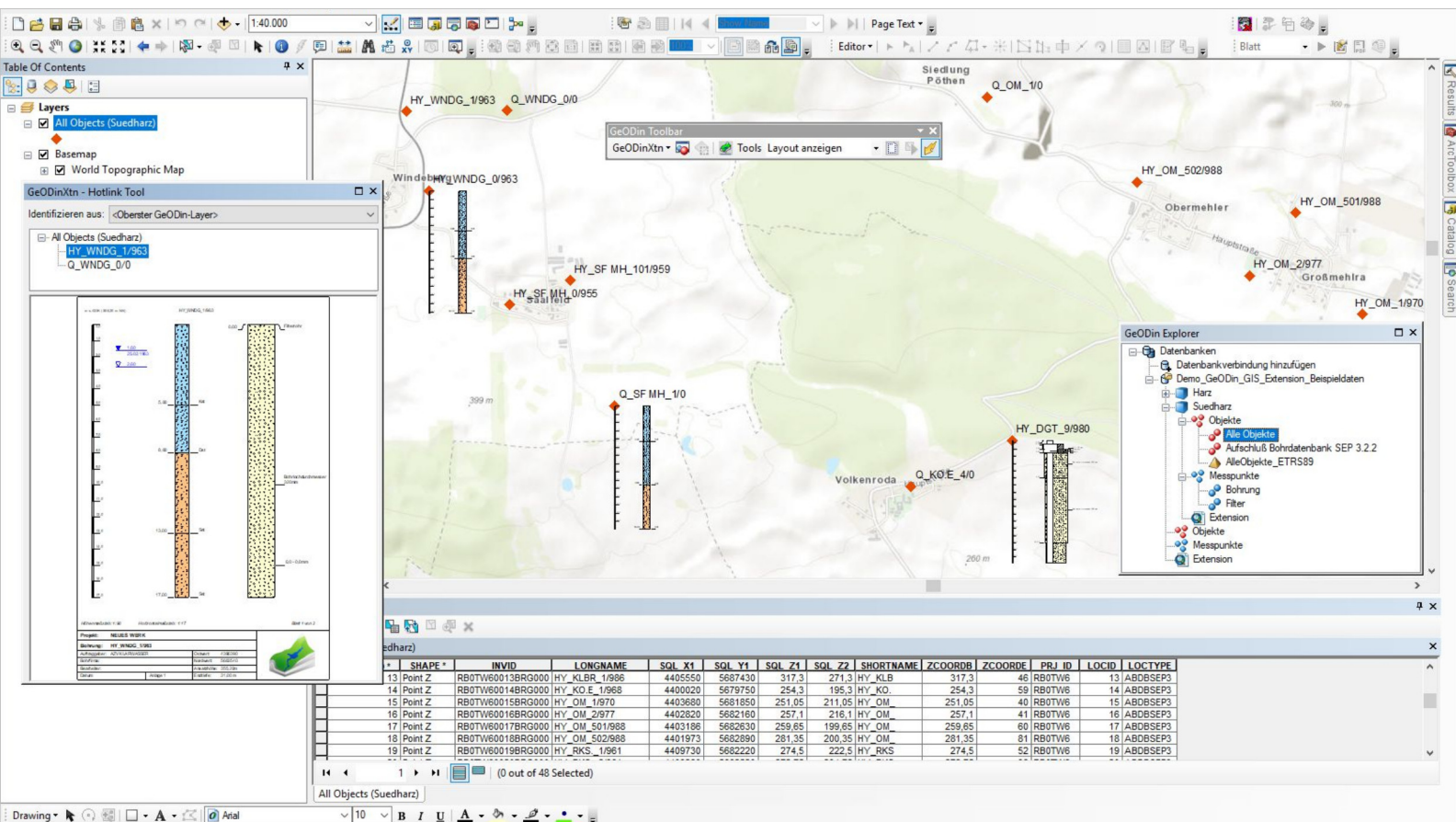
BASIC FUNCTIONS

The following basic functions do not require a GeODin installation or a GeODin licence:

- Connect a GeODin database
- Create GIS Extension user queries
- Create an ArcMap™ layer
- Limit query results on GeODin objects to within a specified range
- Assign the coordinate system to databases and queries
- Save settings in the ArcMap™ document



GeODin Explorer in ArcGIS 10



GEODIN FUNCTIONS

The GeODin functions require a GeODin installation and a GeODin Professional licence:

- Create ArcMap™ layers from GeODin user queries
- Insert GeODin graphics in ArcMap™
- Create GeODin groups
- Start the GeODin cross section assistant
- Select objects in GeODin
- Start general data or measurement data acquisition in GeODin
- Open graphics in GeODin
- Show graphics in an extra window
- Define the default GeODin layout to be used by the GeODin GIS Extension

For information about the GeODin GIS Extension for ArcGIS 8.3 to 10.3 please contact our support team.

ArcGIS™ and ArcMap™ are registered trademarks of Environmental Systems Research Institute, Inc. (ESRI).

REQUIREMENTS

The recommended system requirements are PCs with Windows operating system from Windows 10 (64-bit) with 4 GB RAM and a display resolution of 1920 x 1080 px. GeODin may also be run from a Windows Server 2016 or higher as well as Citrix. Previous Windows operating systems and RAM configurations may work, but these are not supported. Please contact your network administrator for further information.

By default GeODin data is stored in a Microsoft Access® database (note that you do not need a Microsoft Access licence). When working with client/server databases the appropriate database drivers must also be installed. GeODin can be used as a stand-alone program or integrated in a multi-user network. Integrated contextual help is provided in English and German.

GeODin is designed, programmed and distributed exclusively by Fugro. Visit www.geodin.com for further information.