

FUGRO WE ARE GEODIN

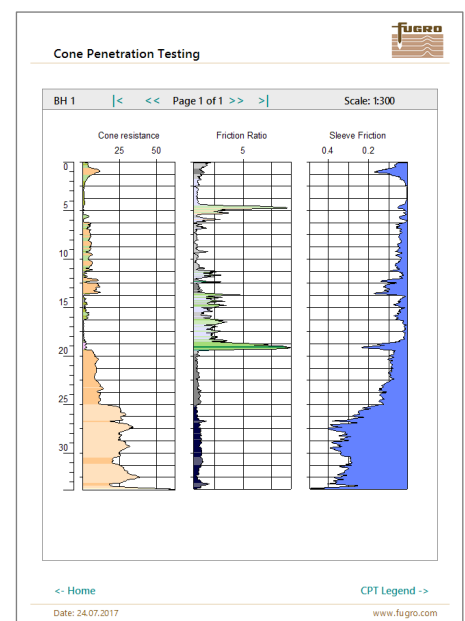
GeoDin data management software is used by geologists, engineers, environmentalists, consultants and planners worldwide for monitoring, collecting, analysing, reporting & presenting data. GeoDin is available in eight languages for Windows 10.

GEODIN SOFTWARE

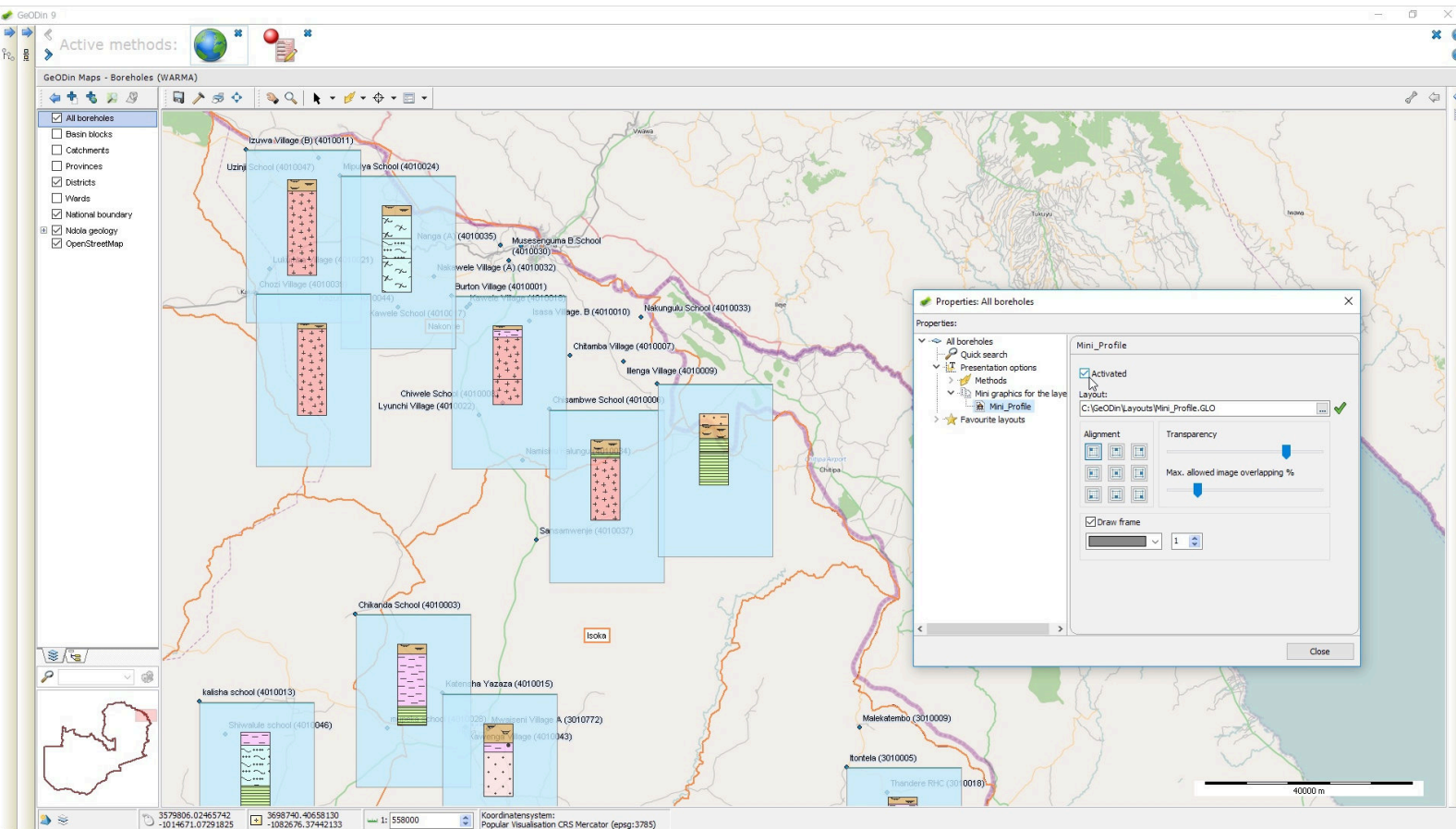
Fugro offers GeoDin in three feature packed editions: GeoDin Essentials, GeoDin Professional and GeoDin Portal. The Essentials edition enables working with geological logs, CPTs, SPTs, samples, groundwater & well design. This data can be easily added to cross-sections and site plans. GeoDin Professional includes many additional features for client/server databases, GIS integration, measurement analysis and presentation. GeoDin Portal allows your desktop GeoDin databases to be shared online, so your customers simply view geoinformation in a browser.

GEODIN SOLUTIONS

GeoDin data management solutions are used worldwide: from monitoring tunnels in Australia & Austria, landslides in Hong Kong & Norway, to groundwater information systems in Berlin and Doha. GeoDin also provides databases for online geothermal portals, integration with environmental remediation programmes, mining operations and water resources management. All German state geological surveys use GeoDin databases, as well as many other national borehole archives in Africa and the Middle East.



GeoDin CPT layout



STANDARDS

GeoDin supports many national and international geological and geotechnical data exchange formats and standards. Data is stored in leading commercial databases such as Oracle®, Microsoft Access/SQL-Server®, PostgreSQL® and MySQL™.

International standards include: ASTM, BS 5930, DIN 4022/23, DIN 4943, DIN EN ISO 14688/89, SEP 3, DIN EN ISO 22475, KA 5, GOST, NEN and ÖNORM.

Borehole profiles and cross-sections can be exported in many common graphic formats (PDF, PNG, EMF etc.).

GeoDin embedded maps support raster and vector data (TIFF, JPG, SHP, ECW, EMF, WMTS etc.).

REQUIREMENTS

The recommended system requirements are PCs with Windows operating system from Windows 10 (64-bit) with 4 GB RAM and a display resolution of 1920 x 1080 px. GeoDin may also be run from a Windows Server 2016 or higher as well as Citrix. Previous Windows operating systems and RAM configurations may work, but these are not supported. Please contact your network administrator for further information.

By default GeoDin data is stored in a Microsoft Access® database (note that you do not need a Microsoft Access licence). When working with client/server databases the appropriate database drivers must also be installed. GeoDin can be used as a stand-alone program or integrated in a multi-user network. Integrated contextual help is provided in English and German.

GeoDin is designed, programmed and distributed exclusively by Fugro. Visit info.geodin.com or geodin.com for further information.