

**GEODIN 9 LIST PRICES: EDITIONS**

VERSION	LICENCE	ESSENTIALS	PROFESSIONAL
GeODin 9	one-time payment	995 €	2995 €

**GEODIN 9 UPDATE PRICES: VERSIONS AND MODULES**

VERSION	EXISTING MODULES	ESSENTIALS	PROFESSIONAL
GeODin 8	Logs, Site	395 €	1995 €
	Labs, Maps, CS, GIS XTN	395 €	795 €
GeODin 7	Logs, Site	695 €	2295 €
	Labs, Maps, CS, GIS XTN	695 €	1295 €

All prices are net.

# GEODIN SOFTWARE PRICES LICENCES, UPDATES AND RENTING

Fugro offers GeODin 9 in three editions: Essentials, Professional and Portal. You can purchase a software licence as a one-time payment. Renting provides the flexibility of just paying for GeODin when you need it. Updates are available from GeODin versions 7 & 8.

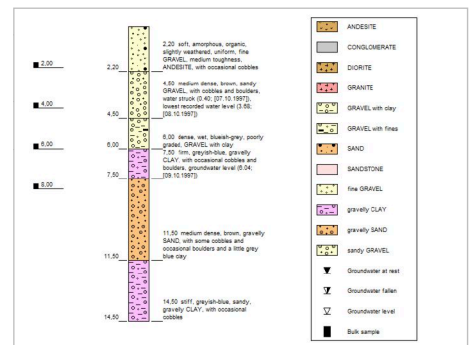
**EDITIONS & UPDATES**

Update to GeODin 9 Essentials from GeODin Logs and/or GeODin Site in Versions 7 or 8 for just 395 €. Users who already have any one of the modules Labs, Maps, CS, or GIS Extension, can update to GeODin 9 Professional from just 795 €. Professional users get the functionality of all the former desktop modules, regardless of which modules you had previously. GeODin Portal is a new rental only product that replaces former GeODin Server editions. GeODin licences are supplied with HASP hardlocks or software licences. GeODin Professional licences can be supplied with a multi-user HASP if required.

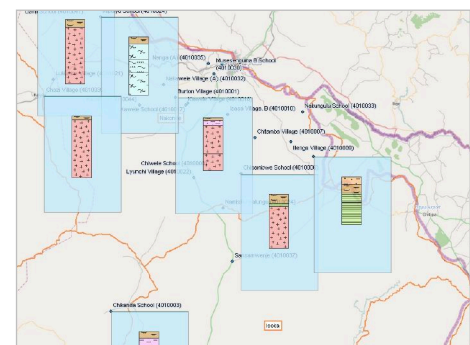
**RENTING**

First of all decide which GeODin Edition you wish to rent. A small activation fee is required for each licence before the initial three month period, after which licences can be rented for either one or three months as required. The quickest way to rent licences is to buy via our web shop.

During the rental period you can buy your licence and Fugro will credit you the activation fee paid at the start of your rental activity. Rental licences always use the latest GeODin version, including the features available to SUS customers.



GeODin Essentials: log with automatic legend



GeODin Professional map with mini borehole profiles

### GEODIN 9 RENTAL PRICES: ACTIVATION FEE

VERSION	ESSENTIALS	PROFESSIONAL	PORTAL
GeODin 9	195 €	295 €	495 €

### GEODIN 9 RENTAL PRICES: TIME BLOCKS

TIME PERIOD	ESSENTIALS	PROFESSIONAL	PORTAL
First 3 months	195 €	595 €	1385* / 1985** €
1 more month	75 €	225 €	495* / 695** €
3 further months	195 €	595 €	1385* / 1985** €

\* no hosting included / \*\* Fugro hosting included  
All prices are net.

## RENTAL CONDITIONS

All rental fees must be paid in advance. The one-time activation fee is refundable when a customer buys the rented licence. The minimum rental period is three months. After the initial three months customers may either rent for one or three months periods, or pause their rental activity. Rental periods start once Fugro has received payment and cannot be interrupted or transferred between different licences.

GeODin Portal can optionally include Fugro hosting on managed servers for an additional 200 € per month. All prices are net (sales tax may be applicable).

## GEODIN+

A GeODin+ contract ensures that you always have the latest features for GeODin Essentials or GeODin Professional. This is a new software update service and is available for both individual & network installations. All prices are net annual fees per licence:

- 195 € for GeODin Essentials
- 595 € for GeODin Professional

Customers with GeODin+ get 20% extra support time free when purchasing support hours and can save on training costs too. Note that GeODin+ includes help with installation issues, but does not include support; this can be purchased in time blocks from 30 minutes to 50 hours.

Users with GeODin 6 or below should contact our support team for update requests. Please see our separate flyer sheets for software training and support conditions.

## REQUIREMENTS

The recommended system requirements are PCs running Windows 10 (32- and 64-bit) with 4GB RAM and a display resolution of 1920 x 1080 px. GeODin may also be run from a Windows 2012 Server or Citrix. Previous Windows operating systems and RAM configurations may work, but these are not supported. Please contact your network administrator for further information. By default GeODin data is stored in a Microsoft-Access® database (note that you do not need a Microsoft-Access licence). When working with client/server databases the appropriate database drivers must also be installed.

GeODin can be used as a stand-alone program or integrated in a multi-user network. GeODin is available in English, French, German, Italian, Portuguese, Spanish, Russian and Turkish. Integrated contextual help is provided in English and German.

GeODin is designed, programmed and distributed exclusively by Fugro. Visit [www.geodin.com](http://www.geodin.com) for further information.