



FUGRO



GEODIN EDUCATION LICENCE STUDENTS, COLLEGES & UNIVERSITIES

The GeODin Education Licence is available specifically for institutes of higher education. We regard this offer as a partnership. Tell us how you would like to see GeODin developed and improved. All you need to do is provide us with information on projects, seminars or other events where GeODin is used.

CONDITIONS

GeODin Education Licences comprise a GeODin Professional network licence for 10-20 users. You receive automatic software updates, hence your licences are always kept up-to-date. There are no annual fees! The only cost is just 495 € to cover software delivery and network installation.

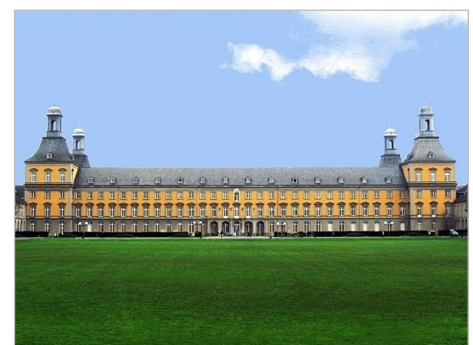
The GeODin Education Licence may be used by students for project work, theses or integrated into the teaching curriculum as part of lecture courses. In special cases more licences can be obtained. The institute must apply for the licences, not individual persons.

LICENCE ACTIVATION

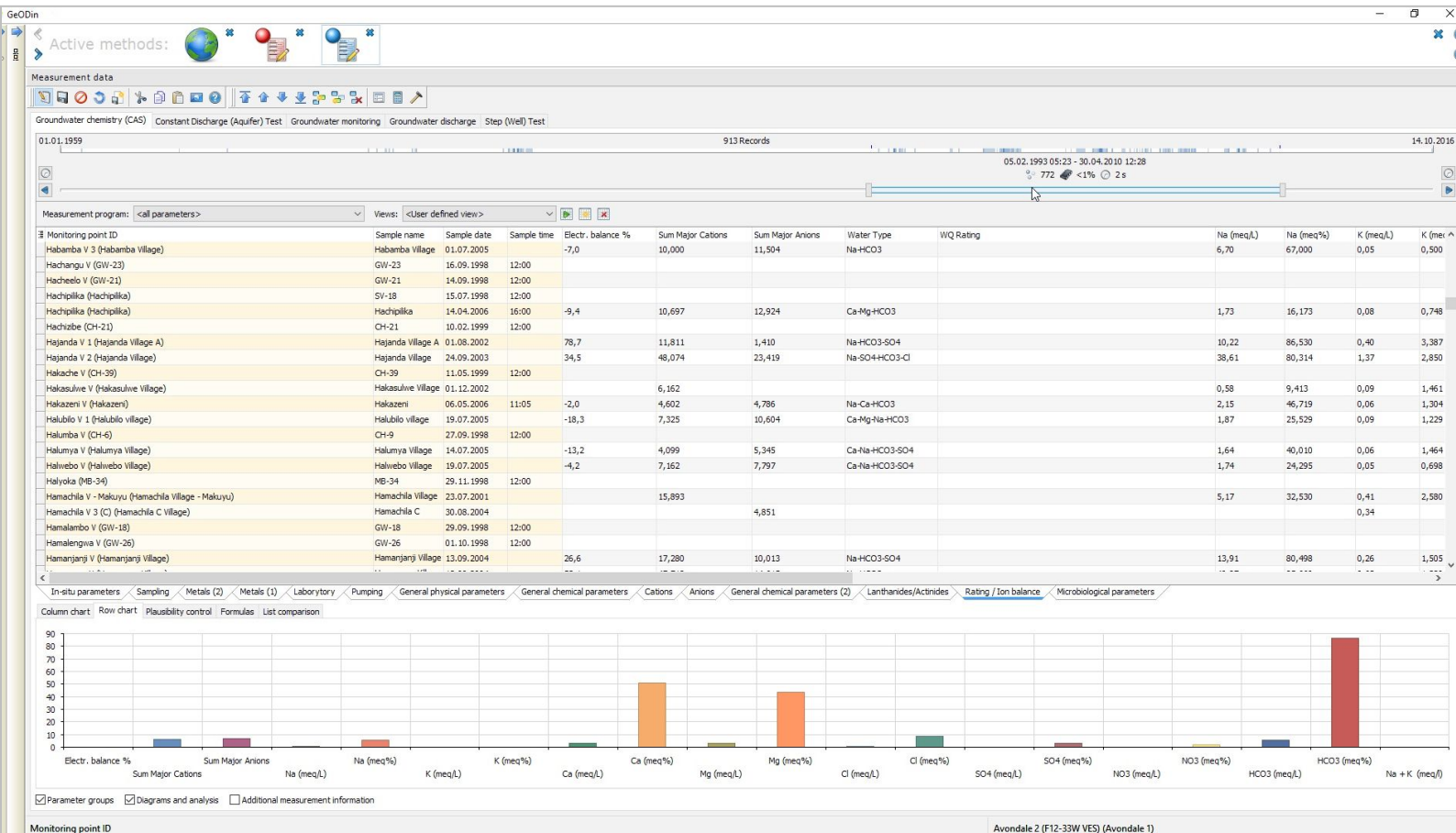
The GeODin licences are not time limited, but must be activated every twelve months. Activation is dependant upon Fugro Germany receiving information on scientific papers, research projects or teaching carried out with GeODin (minimum two A4 pages) detailing how GeODin software is used and how GeODin has been integrated in your course (e.g. lecture, seminar details). We also would like creative layouts or graphics in a GeODin format (ggf or glo), PNG or PDF. When not otherwise agreed in writing prior to activating GeODin licences, the information supplied will be used on our website www.geodin.com.



Technical University Berlin



Rheinische Friedrich-Wilhelms-Universität Bonn



GEODIN TRAINING

We also offer training for using GeODin in your educational establishment. You are welcome to invite a GeODin trainer to give a practical demonstration at your college or university. Depending on your specific field of interest, such events can be tailored to your special course requirements. Advanced software training courses may also improve your students professional career chances.

Training is provided free of charge wherever possible, depending on the travel & lodging arrangements. Otherwise costs will be kept to the normal rates for guest speakers.

Any feedback on your wishes or which new features should be built into GeODin is always welcome.

TECHNICAL DETAILS

The recommended system requirements are PCs running Windows 10 (32- and 64-bit) with 4 GB RAM and a display resolution of 1920 x 1080 px. GeODin may also be run from a Windows 2012 Server or Citrix. Previous Windows operating systems and RAM configurations may work, but these are not supported. When working with client/server databases the appropriate database drivers must also be installed. Please contact your network administrator for further information.

GeODin can be used as a stand-alone program or integrated in a multi-user network. GeODin is available in English, French, German, Italian, Portuguese, Spanish, Russian and Turkish. Integrated contextual help is provided in English and German.

GeODin is designed, programmed and distributed exclusively by Fugro. Visit www.geodin.com for further information.