



# GEODIN+ SOFTWARE UPDATE SERVICE

GeODin is continually being developed and improved. To keep getting all the latest features, new GeODin+ (software update service) contracts are available for both individual & network installations. Prices start at just 195 € per licence per year.

## GEODIN+

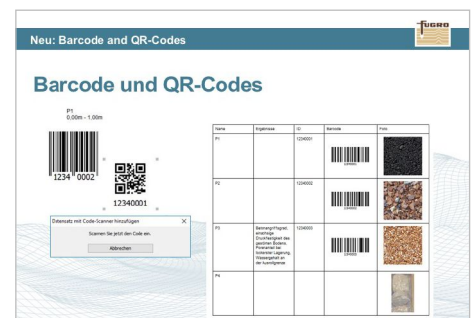
Get all the latest features, receive 20% extra support time free when purchasing support hours and save up to 800 € on training costs with a GeODin+ (software update service) contract:

- 195 € for GeODin Essentials
- 595 € for GeODin Professional

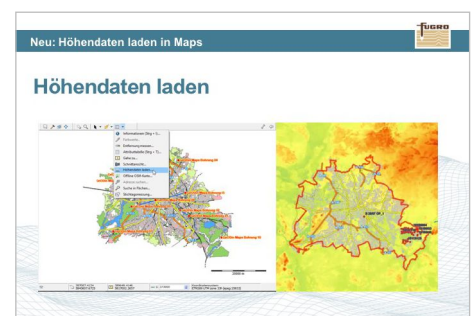
All prices are net annual fees per licence. For short questions on GeODin usage our support team is available Monday to Friday from 9am - 4pm CET. Note that the GeODin+ contracts include help with installation issues demos, updates

and upgrades, but do not include support - this can be purchased in time blocks from 30 minutes to 50 hours. For support pricing and conditions, please see our separate flyer. Answers to questions on the use of GeODin 8 and 9 can be found in the many support articles in our Help Center: [support.geodin.com](http://support.geodin.com).

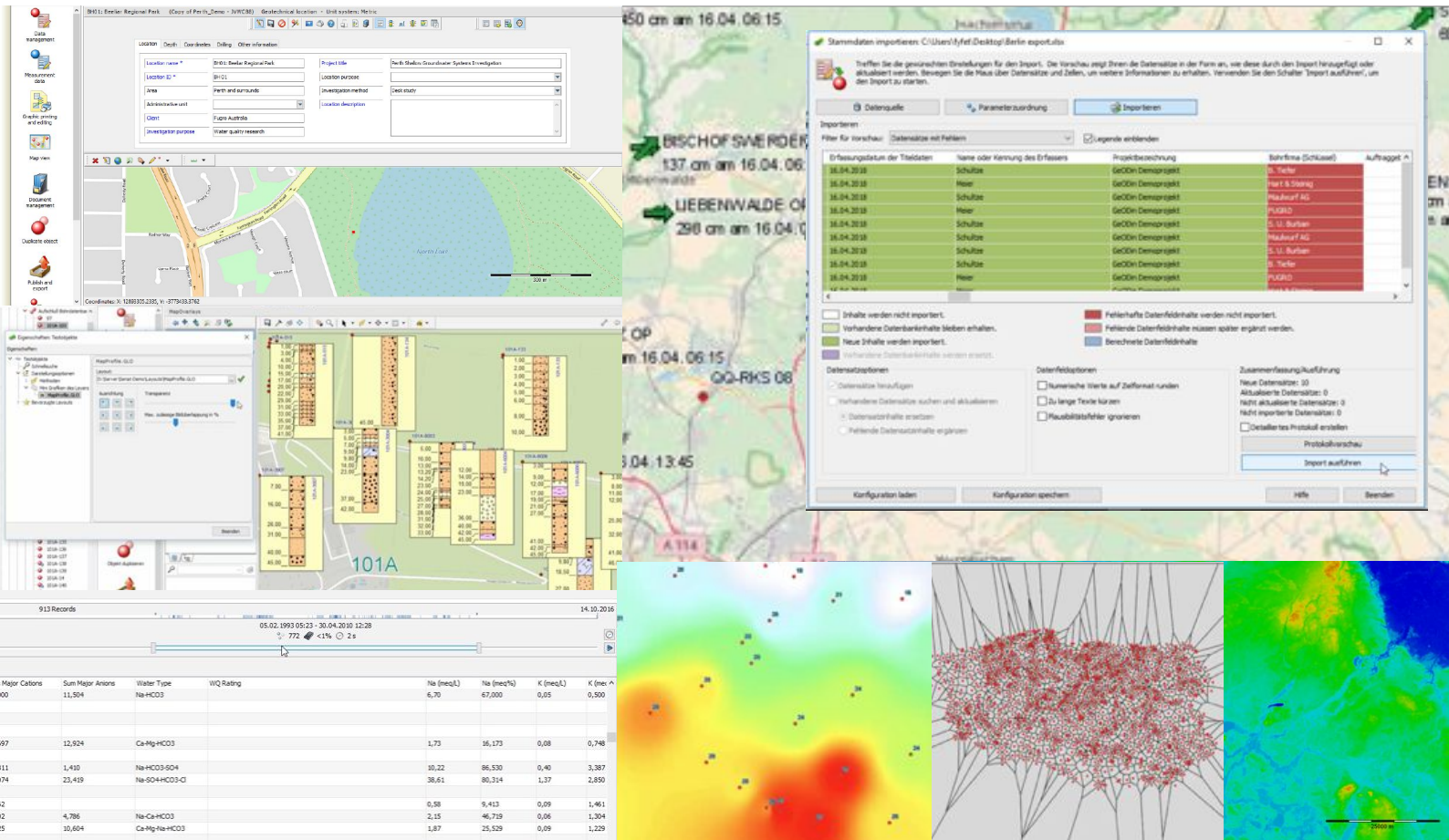
To best help our customers remotely we use [Skype for Business](#), [FastViewer](#), or [GoToMeeting](#) which are all free to download. Please contact your system administrator to see which remote desktop software you are allowed to run in your network.



New in GeODin 9 Essentials



New in GeODin 9 Professional



## NEW IN GEODIN 9

Some of the many new and improved features in GeODin 9 are listed below:

- Time range measurement controller
- Unit conversion (metric <-> US)
- Legends for multiple profiles
- New editor for points, lines, polygons
- Load elevation data in maps
- Offline Open Street Maps
- Contouring and clipping
- Triangulation and interpolation
- Better WMS integration
- Searching & filtering in map areas
- Markers and distance rulers in maps
- Maps with mini graphic overlays
- Maps and legends in web GIS
- More map preview options
- Barcodes and QR-codes
- Go to object & object groups
- Hide show all columns in grid view
- Importing general data wizard
- Updating geophysical data
- Adding objects with multiple profiles
- GeODin publications
- Improved formular syntax & formatting
- Redesigned data entry masks
- GeODin memory optimization

## REQUIREMENTS

The recommended system requirements are PCs running Windows 10 (32- and 64-bit) with 4GB RAM and a display resolution of a 1920 x 1080 px. GeODin may also be run from a Windows 2012 Server or Citrix. Previous Windows operating systems and RAM configurations may work, but these are not supported. When working with client/server databases the appropriate database drivers must also be installed. Please contact your network administrator for further information.

GeODin can be used as a stand-alone program or integrated in a multi-user network. GeODin is available in English, French, German, Italian, Portuguese, Spanish, Russian and Turkish. Integrated contextual help is provided in English and German.

GeODin is designed, programmed and distributed exclusively by Fugro. Visit [www.geodin.com](http://www.geodin.com) for further information.