



ON-SITE TRAINING GEODIN EXPERTS COME TO YOU

Fugro regularly carries out GeODin training workshops worldwide: from Australia to Botswana, Brazil, China, Gambia, Hong Kong, India, Singapore, Tanzania, United Arab Emirates, Yemen and Zambia. The workshops are held in English - interpreters for other languages can be provided on request.

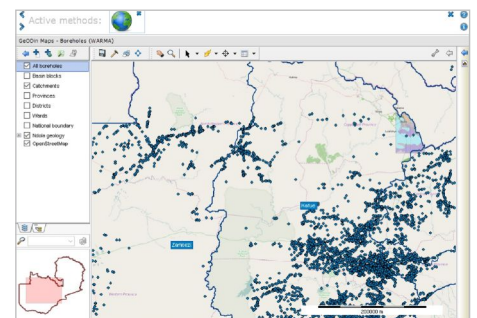
FROM BASICS TO EXPERTS

Fugro offers on-site GeODin training. We can come to your offices to instruct you & your colleagues, covering all aspects of GeODin, from a beginner, through advanced to an expert level. Specialized custom training courses are also available on request, which include detailed documentation.

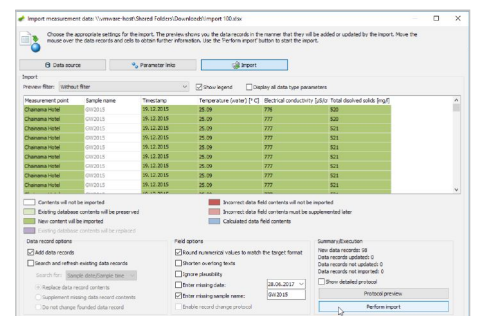
For new users we recommend first taking a free online GeODin basics introductory session to help getting started with the software. This is also available as a PDF guide and prepares colleagues for further GeODin courses.

A typical training day is 6 hours, not including mid-morning, lunchtime and mid-afternoon breaks. One and a half day courses are usually 3 hours in the afternoon followed by 6 hours the following day.

Prices are per trainer. We recommend two trainers for groups of 10 persons or more. In addition to the training course fee, travelling time (at a reduced hourly rate) and travelling expenses (flights, hotels, visas) will be billed. Please check with your IT administrator to ensure that GeODin can be installed in advance on your computer network.



GeODin map showing query results



Measurement import preview

GEODIN 9 ON-SITE TRAINING DAYS AND COURSES

DAYS	EXAMPLE COURSES	GEODIN+ PRICE / PRICE
1 day	GeODin beginners course	1400 / 1450 €
1½ days	GeODin beginners to advanced course	1875 / 1950 €
2 days	GeODin beginners and advanced courses	2650 / 2750 €
3 days	GeODin beginners & advanced courses, expert topics	3800 / 3950 €
5 days	GeODin beginners, advanced and expert courses	6200 / 6450 €

Additional travelling expenses will be charged.
GeODin+ is a software update service
All prices are net.

COURSE TOPICS

Typical course topics are listed for different user categories:

GeODin Basics Introduction:

- GeODin user interface
- GeODin terminology
- Object and data types
- GeODin graphics
- Data collection editors
- Measurement data
- Dictionaries, fills & symbols
- User settings
- GeODin Help

GeODin Beginners Course:

- Databases, projects
- General data
- Layer data
- Samples
- Data sequences
- Well design & groundwater
- Simple layouts

- Document management
- Creating maps

GeODin Advanced Course:

- Text macros
- Importing documents
- Advanced maps
- Advanced layouts
- Geotechnical cross-sections
- Environmental cross-sections
- Site plans
- Groups & queries
- Importing measurements

GeODin Expert Course:

- System queries
- Object frame queries
- Statistics
- GeODin Portal
- Portal layouts
- Selectors
- Creating data types
- Complex data types

GeODin is designed, programmed and distributed exclusively by Fugro. Visit www.geodin.com for further information.