

GEODIN SHUTTLE COLLECT GEOINFORMATION FREE!

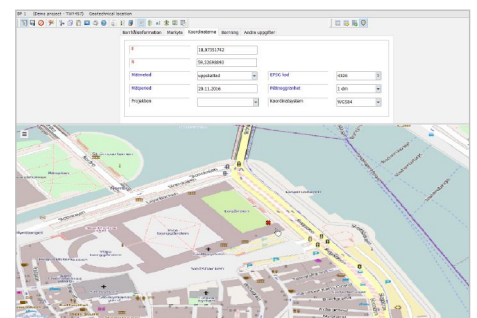
GeODin Shuttle is a free software program for collecting geological, geophysical, geotechnical and environmental data. It can be used with a free licence, either on site or in the office, wherever additional GeODin workplaces are required.

ON THE ROAD

GeODin Shuttle makes an ideal addition to a field computer, so that drilling data and other geo-information can be captured on site without the need for a full GeODin licence. GeODin databases, projects and boreholes can be created and the installation customised by installing additional object types and standards. The databases can be transferred by email or simply copied to a USB drive. GeODin Shuttle can be further extended on site by adding new codes, fill patterns and symbols to GeODin dictionaries.

IN THE OFFICE

GeODin Shuttle can also be integrated in an office set up where other GeODin licences are in use. Databases created with GeODin Shuttle use the same Microsoft Access® database format as full GeODin editions and hence the data collected can be read and used by colleagues in the office with GeODin Essentials and GeODin Pro. Individual boreholes, projects or complete databases can be transferred within the GeODin user interface. New dictionary codes created in the field can be synchronised with the office installation.



GeODin Shuttle: Map preview

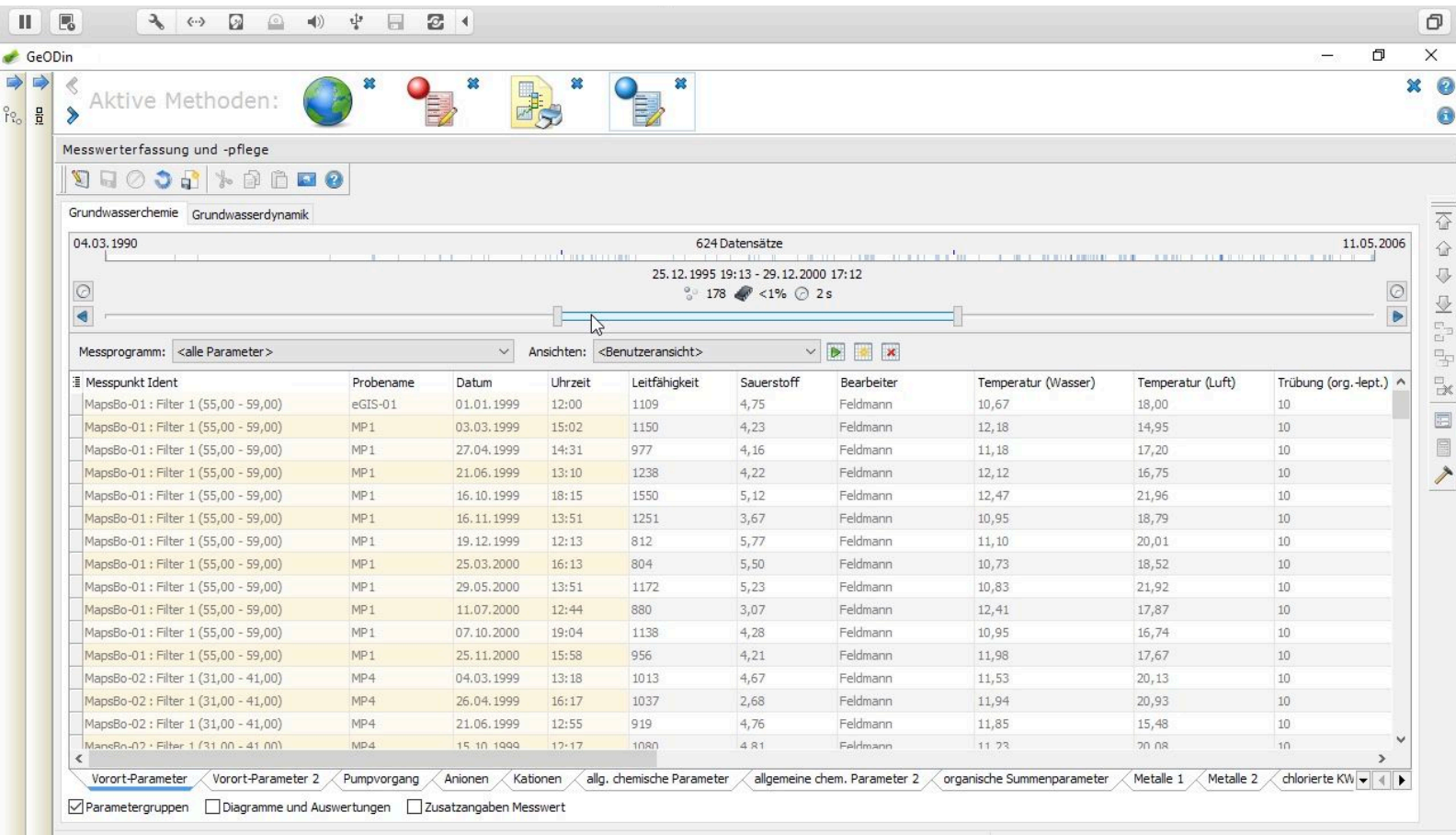
Aktive Methoden:

Aufschluß Bohrdatenbank SEP 3.3.4 (17 von 17 Objekten) - GeODin Maps Bohrung 08 (GeODin Maps Beispielbohrung) - Ansichten: <Benutzeransicht>

Ziehen Sie eine Sp. Zum Objekt 'GeODin Maps Bohrung 08' wechseln/ gruppieren.

Nummer der TK25	Archivfachbereich	Archivnummer	Aufschluß-Kurzbezeichnung	Aufschlußname, vollständig
4551	HY	14	MapsBo-01	GeODin Maps Bohrung 01
3551	HY	43	MapsBo-02	GeODin Maps Bohrung 02
3551	HY	259	MapsBo-03	GeODin Maps Bohrung 03
4651	HY	121	MapsBo-04	GeODin Maps Bohrung 04
3551	HY	6	MapsBo-05	GeODin Maps Bohrung 05
4651	HY	259	MapsBo-06	GeODin Maps Bohrung 06
3551	HY	6	MapsBo-07	GeODin Maps Bohrung 07
4651	HY	14	MapsBo-08	GeODin Maps Bohrung 08
3551	HY	121	MapsBo-09	GeODin Maps Bohrung 09
4651	HY	43	MapsBo-10	GeODin Maps Bohrung 10
4551	HY	14	MapsBo-11	GeODin Maps Bohrung 11
3551	HY	43	MapsBo-12	GeODin Maps Bohrung 12
3551	HY	259	MapsBo-13	GeODin Maps Bohrung 13
4651	HY	121	MapsBo-14	GeODin Maps Bohrung 14
3551	HY	6	MapsBo-15	GeODin Maps Bohrung 15

GeODin Shuttle: Go to object



GeODin Shuttle: Time range controller

DEMO FEATURES

GeODin Shuttle 9 contains many features from GeODin Essentials and GeODin Professional in demo modus. Hence you can try out creating geological cross-sections and site plans, make you own GeODin layouts and reports, or try out time series, pie charts, Stiff and Piper diagrams.

All graphics are displayed with a demo modus overlay, so that screenshots or printed output is not suitable for professional use.

The underlying data records in the Microsoft Access® GeODin database are fully compatible with Version 9 GeODin Essentials, GeODin Professional and GeODin Portal. Databases created with GeODin Version 8.3 or earlier can be read by GeODin Shuttle but saving them will convert the database structure to a GeODin Version 9 format. Converted databases can only be read by GeODin 8.4 or Version 9.

REQUIREMENTS

The recommended system requirements are PCs running Windows 10 (32- and 64-bit) with 4 GB RAM and a display resolution of 1920 x 1080 px. GeODin may also be run from a Windows 2012 Server or Citrix. Previous Windows operating systems and RAM configurations may work, but these are not supported. Please contact your network administrator for further information. By default GeODin data is stored in a Microsoft-Access® database (note that you do not need a Microsoft-Access licence). When working with client/server databases the appropriate database drivers must also be installed.

GeODin can be used as a stand-alone program or integrated in a multi-user network. GeODin is available in English, French, German, Italian, Portuguese, Spanish, Russian and Turkish. Integrated contextual help is provided in English and German.

GeODin is designed, programmed and distributed exclusively by Fugro. Visit www.geodin.com for further information.