



FUGRO

GEODIN ESSENTIALS

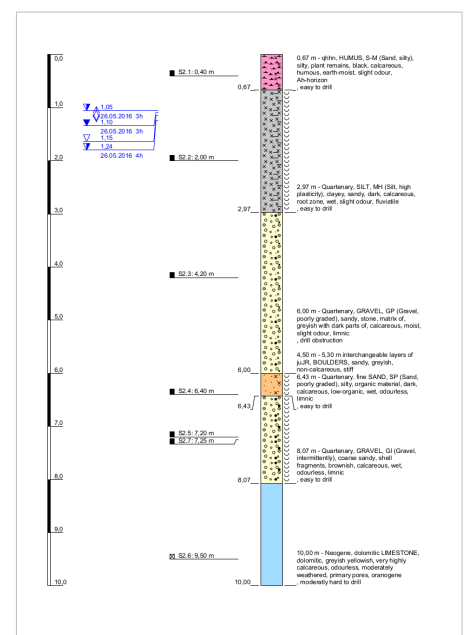
Big feature list, small price: Collect and present geotechnical and geoenvironmental data in user customisable multilingual templates. Create cross-sections integrating borehole logs, well design, CPTs, SPTs, samples and groundwater. Use queries to analyse GeoDin databases.

BOREHOLE LOGS

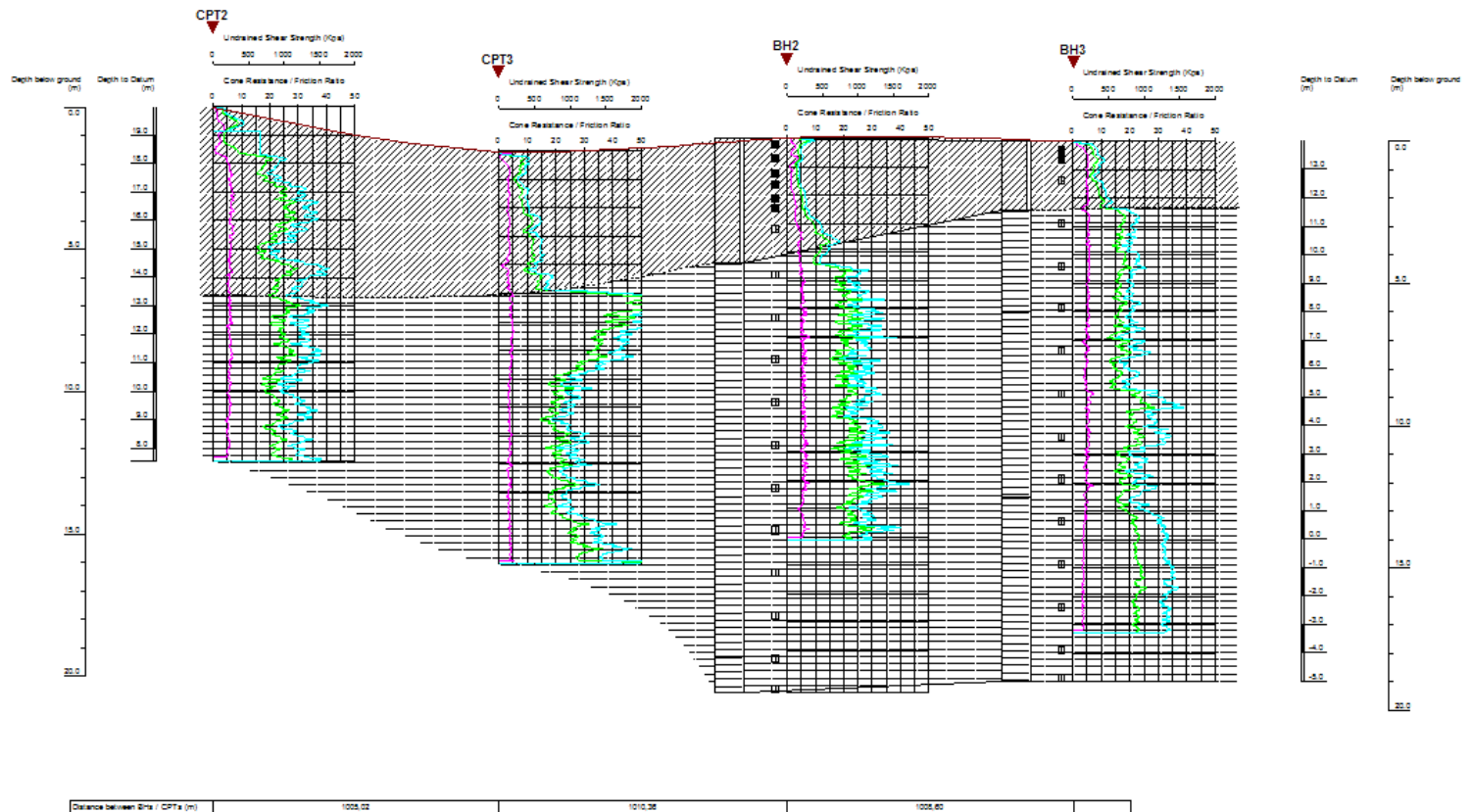
With GeoDin Essentials you can present geological layers, CPTs, groundwater, well design, soil parameters, samples, core photos and tables. Preconfigured templates are provided which are user customisable for different content and paper sizes. Template management is simplified by using layout collections, layout snippets and quick settings. Multilingual borehole logs can be printed using predefined standards and translations for both text and fill patterns. These can be customised by users in their GeoDin dictionaries.

SECTIONS & SITE PLANS

Assistants help you in the quick creation of cross-sections and site plans. Using the XYZ borehole positions, cross-sections and plans can be created from multiple projects stored in your GeoDin database. Define lines of section, turning points, projection, vertical & horizontal scales and paper format (10 x 10 m). Integration of wells & groundwater, CPTs, lab analyses and other geotechnical and environmental parameters can be saved as scenarios and reused in further sections and plans.



GeoDin borehole profile with samples and groundwater



STANDARDS AND FORMATS

GeoDin Essentials supports the following international standards, among others:

- DIN 4022/23
- DIN EN ISO 14688/89
- DIN 4943
- SEP 1, SEP 3
- DIN EN ISO 22475
- NEN
- ÖNORM
- GOST
- KA5
- ASTM
- BS 5930

GeoDin Essentials export formats are:

- Layouts: PDF, PNG and EMF
- Report data: CSV and XLSX
- Data grid views: XLSX, XLS, XML, HTML and TXT
- Data sequences: CSV

MORE FEATURES

When interpreting soil horizons and rock layers in cross-sections, you can choose between freehand and automatic construction of layer boundaries between profiles. The polygons created are fully editable, so that adjustments for local stratigraphic variations can be made. GeoDin symbols can be used to code different types of locations. GeoDin queries allow the contents of thousands of data records to be searched almost instantaneously, for both individual users or GeoDin teams.

GeoDin can be used as a stand-alone program or integrated in a multi-user network. GeoDin is available in English, French, German, Italian, Portuguese, Spanish, Russian and Turkish. Integrated contextual help is provided in English and German.

GeoDin is designed, programmed and distributed exclusively by Fugro. Visit info.geodin.com or geodin.com for further information.